

PTK80 – PEOPLE BEHAVIOR OBSERVER

The PTK80 system main duty is tracking and observing people's behavior in public places and crowded areas, analyzing their paths and building graphic maps. The software uses up-to-date algorithm to discreetly observe people's behavior and create statistics on the achieved images: pedestrian routes can be thus improved in hospitals, airports and in any public and crowded place.

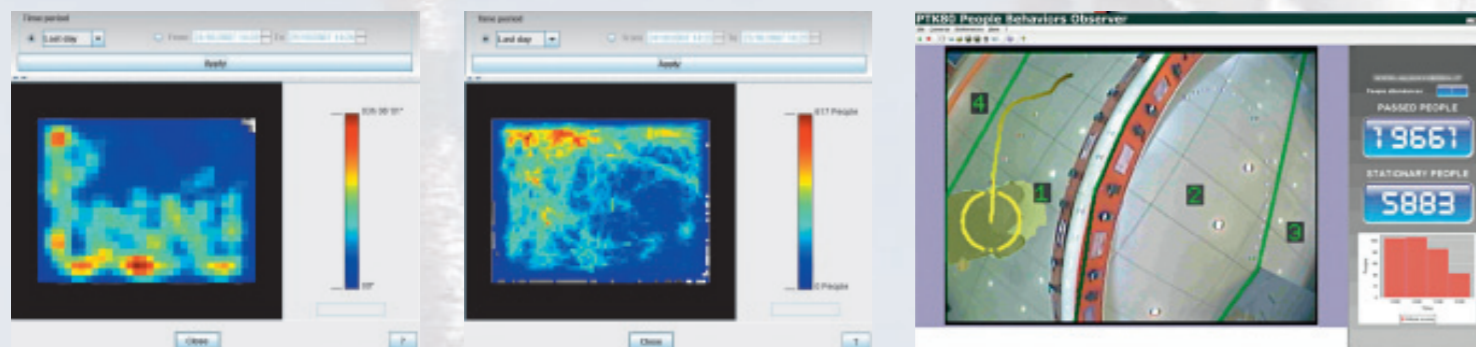
In shopping centres, the PTK80 software can detect which is the most visited point and how long people remain in front of a specific exposition area – critical marketing and statistical information.

Since the camera has a vertical position on the ceiling over people's movement (aerial view), the PTK80 allows to calculate the ratio between the people standing in a specific point and the people that access to an area; the camera vertical position being a full privacy guarantee.

Where security matters are the most important, the PTK80 software automatically detects all the anomalous paths also in case of very dense crowd: for example, a movement in the direction opposite to the expected one can optionally generate an alarm.

PTK80 System Applications:

- Airport terminals, railways stations, ...
- Shopping centres and exhibitions
- Pedestrian route detections for statistical and marketing applications
- People's behavior observing for crowded areas



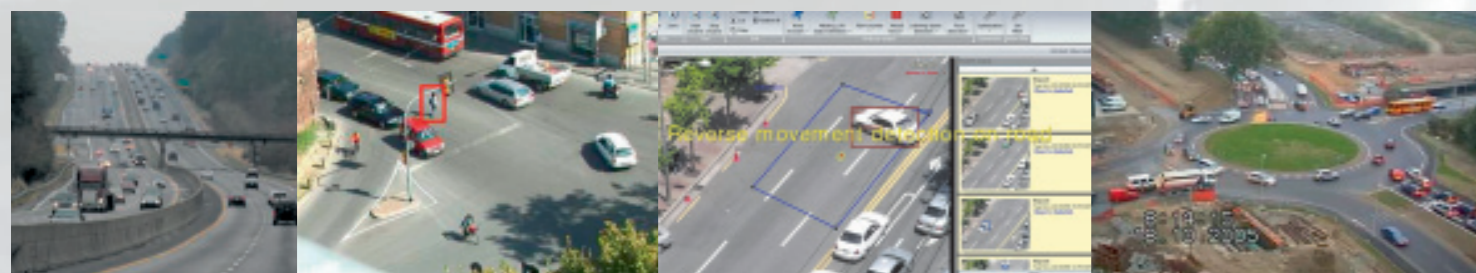
TMSV10 – VIDEO TRAFFIC ANALYZER

In Traffic Management, the TMSV10 system is able to analyze traffic flow in order to prevent casualties with specific alarms and to have simple traffic statistics of an intersection or a roundabout.

Advanced reporting tools and the management of real-time outputs give users unparalleled features and alarms to detect unexpected and anomalous events:

- Detection of obstacles and still vehicles on the carriageway
- Queue and slow traffic
- Vehicles flowing in wrong directions
- Reporting tools & statistics for traffic analysis (counting, length classification – on three vehicle classes, speed) and intersection / roundabout origin – destination studies

The TMSV10 system is an open, flexible and modular solution and is offered according to the specific site: thanks to input / output interfaces it can offer an easy integration of digital signals coming from traffic lights and loop detectors as well as the possibility to manage variable message panels to deliver traffic information to drivers.



PARTNERS

ONE TRACK®

SALES AND WARRANTY CONDITIONS

The present document has no contractual value: changes in any technical description and function are possible without notice. Please, contact DOINGSECURITY to have a specific offer on the product of your interest.

DOINGSECURITY guarantees its products performances only in relation to a proper use, destination and application as expressly indicated. Any additional use must be considered a misuse and thus potentially dangerous. If your Company will resell DOINGSECURITY's products, please, make sure your Customers know and understand what herein reported so that they can achieve the same benefit.

DOINGSECURITY's liability for any defective product (software or documentation) is limited to repair or replacement of the product (software or documentation), at DOINGSECURITY's option, within 24 months from the delivery date. Any product is to be installed in accordance with the manufacturer's instruction and the unit should not be modified or tampered without the prior written DOINGSECURITY's consent.

DOINGSECURITY shall not be liable for damages due to products misuse, improper storage, exposure to excessive moisture, dampness, temperature or other environmental conditions, unauthorized modifications, connections, repair and for damage to other products caused by any defect in DOINGSECURITY's products (software or documentation), damages arising out of loss of use, loss of revenues or profits, or any other damages, whether incidental, consequential, or otherwise.

The malfunctions verification will be solely made by DOINGSECURITY and its technical staff. Unless considered enforceable or unlawful under applicable law, the provided warranty is limited to the product replacement / repair and excludes any other type of damage.

In case of product defect or for any complaint, please, refer your problem as soon as possible to DOINGSECURITY: it will be our goal to solve your problem in the shortest possible time to your full satisfaction.

DOINGSECURITY®

Via Santo Stefano 74 • I – 40125 Bologna (BO)
Tel. +39 051 621 15 53 – fax +39 051 337 09 60
info@doingsecurity.it – www.doingsecurity.it

doingsecurity

COSTRUIRE SICUREZZA

Rel. n. CPA-1/10 01/01/2010

www.doppioclicker.it



Video Analytics Catalogue

ONE-TRACK – THE “UNIVERSAL” PTZ AUTO-TRACKING SOFTWARE FOR SMART VIDEO-SURVEILLANCE SYSTEMS

With the OneTrack smart camera system, a moving object or a person can be tracked automatically and recorded, without any manual operation or any operator intervention.

Upon detection of motion in the image, the PTZ camera is positioned on the detected object or subject and tracks it automatically, occasionally zooming in to catch close-up shots.

In a context of standalone (no operator) recording, video sequences recorded in intelligent tracking mode have much more chances to capture significant events with enough details to enable identification. In most cases, a static camera or a PTZ camera in scan mode cannot have the required zoom level to enable useful identification. With the OneTrack system, full capabilities of PTZ cameras are exploited without the need of an operator, granting a better efficiency of the whole system. The OneTrack system works either as a standalone or integrated with a Digital Video Recorder (embedded solution).

ONE TRACK – software license for each PTZ camera automatic tracking, suitable for Windows-XP, Vista, Windows 7 operating systems. Use in combination with PV149/PV183-8 frame grabbing cards, PV154 digital I/O board and CNV200 data-interface.

F TRACK – software license for each fixed camera. In Multi-track mode, the fixed cameras observe a wide area while the PTZ cameras are tracking moving objects (Bridge function).

PV149 – PCI bus DVR card featuring 4 video inputs, 100 fps PAL. It provides MPEG4 images on which the ONE TRACK software manages the “smart motion detection” and “auto-tracking” functions. DB9 / 4 coax cable and driver CD provided in the package.

PV183-8 – PCI bus DVR card featuring 8 video inputs, 200 fps PAL. It provides MPEG4 images on which the ONE TRACK software manages the “smart motion detection” and “auto-tracking” functions. DB9 / coax cables and driver CD provided in the package.

PV154 – 8 digital IN / 8 digital OUT card for PCI bus, suitable for the GPIO functions inside the ONE TRACK Controller; it provides triggers to the external devices (for example DVRs, phone diallers, ...) and it must be placed in a free slot of the PC bus close to the PV149 or PV183-8 card.

CNV200 – USB-RS485 converter for USB interfaces, suitable for the data link to the PTZ cameras in a ONE TRACK system. Power supply through the USB port; suitable for Windows, Mac & Linux operating systems. It is better to use a converter per PTZ camera.

MTCxFx – ONE TRACK Workstation featuring the PV149 or PV183-3 card and the PV154 digital I/O card. The controller is based on the following configuration: Asus P5Q-Se mother board, Intel Core 2 Quad 9400 processor, 2.66Ghz 6Mb Cache, 2 Modules DDR2 800Mhz 1Gb RAM, DVD Sata 16x 52x reader, Western Digital 7200rpm 160Gb HDD, GeForce 9500gt 512Mb Pci-Ex or ATI X550 graphic board, Enermax Cyclops 500W PSU, RS232 interface and 4 USB ports. Operating system: Windows XP or Vista OEM. Rack mounting housing. Monitor not included.



ONE TRACK System Applications:

- Perimeter security, parkings and car dealerships
- Critical infrastructures (maritime ports, train stations, bridges, ...)
- Private and public areas
- Government, defense and public buildings
- Construction sites, unattended utilities
- Factories, refineries, pipelines, ...



PI VU PRO – INTELLIGENT VIDEO MANAGEMENT SOFTWARE

PI VU PRO is the ideal video management software for mid-sized over IP applications. It's capable of managing up to 64 network cameras and delivering high quality live and playback videos simultaneously.

Its built-in video analysis engine can greatly reduce human errors during daily monitoring and record videos that are useful to the end users. Remote monitoring and playback is possible through the web browser, client software or even mobile devices. Data can be backed up in multiple places and the backup can be performed remotely.

System type – Client-Server 4 IP video flows, expandable to 64 video channels

Cameras management – manual add camera and auto detect camera; over IP net cams support (supported brands: AXIS, SONY, Panasonic, AVTech, Canon, D-Link, ACTi, Mobotix, Vivotek, AMTK, Arecont Vision, Etrovision, Level1, Planet, Toshiba, Zavio)

Video – resolution up to Megapixel and MJPEG, MPEG4, H.264 compression; configurable frame rate, max 25/30 FD1

Audio – two-way streaming with G.711 / G.726 compression

Live View – up to 5 monitors with different viewing; display mode: live view, e-map, event monitor, playback and full-screen; split screen: 1 / 4 / 6 / 9 / 13 / 16 / 25 / 36 / 64; PTZ controls; sequence mode with user-defined patterns; configurable E-Map monitor; single/continuous snapshot in JPEG format; Motion Display; Image Enhancement

E-Map Monitor – PIP-Video integrated on E-Map; pop-up video displayed on the map

Backup – multiple directory / network storage; backup from remote client software/Web client

Playback – export recorded files to AVI, video search on date/time or event, complete control of the playback video functions

Trigger & Events – motion detection, digital trigger of the camera, motion display, event notifications

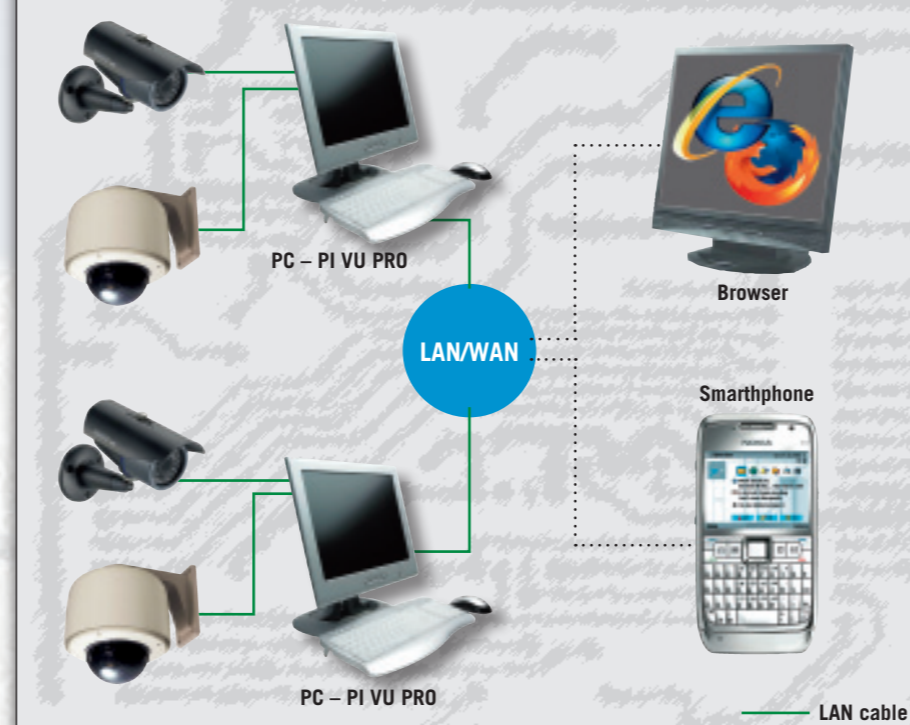
System Status – connected / disconnected / recording / event triggered camera; system time, login users, network bandwidth

Network – protocols TCP / DP / HTTP / FTP / SMTP / DHCP / DNS / ARP / ICMP / NTP / UPnP / RTP / RTSP / RTCP

System requirements – Hardware: CPU Intel Core 2 Duo or above, RAM min 1 GB and Hard Disk min 200 GB, graphic card with DirectX 9.0c or above, network interface 100 MB or above; Software: Windows 2000(SP4), XP(SP2), Vista(2003) operating system and IE7 or above

Video Analytics – real-time image enhancement (Light Enhancing, Fog Removal, Details Enhancing, ...), Smart Motion Detection, people counting & tripwire algorithm, “object loss” & “removed object” algorithm, camera tampering detection

PI VU PRO System Architecture



PI VU PRO System Architecture:

- Residential & commercial buildings, retail
- Private and public areas
- Parkings and car dealerships
- Warehouses



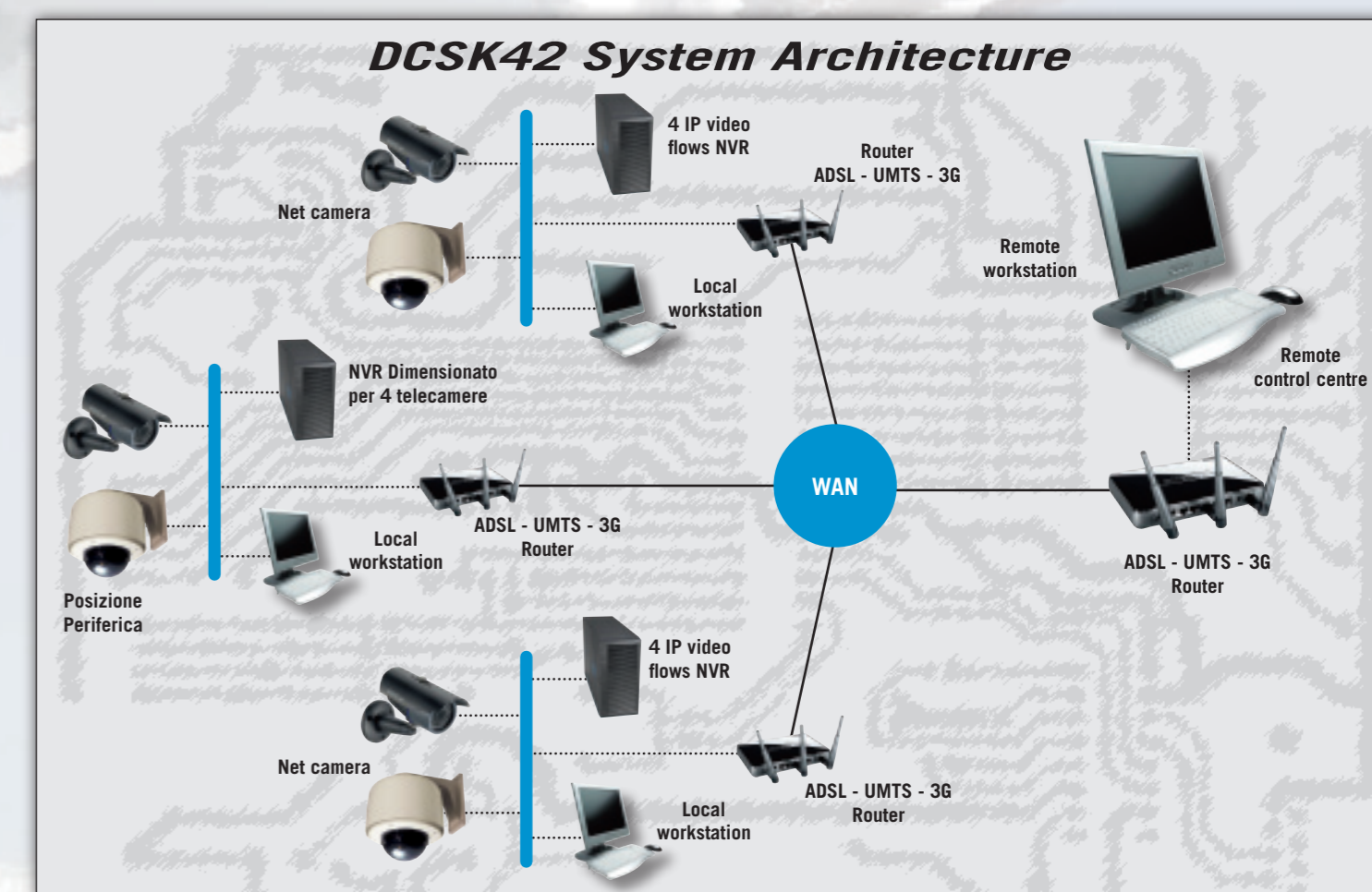
DCSK42 – AUTOMATIC SMOKE VIDEO DETECTOR FOR OUTDOOR USE

DCSK42 is an innovative and efficient real-time over IP video smoke detector for outdoor use. The analysis engine is based on a powerful algorithm able to detect more than homogeneous color masses, allowing an accurate detection even in presence of bad environmental conditions or large image zooming – thus granting an high reliability in outdoor use for fire prevention.

Applications possibilities are thus very extended, reducing the need of multiple video points in the same site. The module is suitable to detect fires in low illumination conditions (i.e. at night), using a dual detection method based on the luminance prevalence and on the detected light behavior.

DCSK42 – as a plug-in of the DCET42 “eye tech” video platform – has been developed for an open and distributed system architecture, expandable in time, allowing a site monitoring and control from any authorized remote point.

The software license is based on 4 over IP video flows and can be extended over several IP recorders. It provides the AXIS support, the Megapixel resolution and the MPEG4 compression management, the built-in image enhancement system (Light Enhancing, Fog Removal, Details Enhancing, ...), a viewing interface with a built-in editor, the “Instant Recording” function for the instantaneous audio&video recording without interrupting other software functions, the false colors viewing when using thermal cameras, geographically the active mapping for the command and the control of the different net cams, a tour editor.



DCSK42 System Applications:

- Wood fire prevention
- Outdoor warehouses and goods storehouses
- Critical infrastructure protection
- Maritime ports